

# STANLEY®

## CD10 ANCHOR STAND (P/N 62275)



### USER MANUAL Operation and Parts



© 2014 STANLEY Black & Decker, Inc.  
New Britain, CT 06053  
U.S.A.  
65138 12/2017 Ver. 6



# OPERATION

Anchor Stand 62275 is designed to be used with the STANLEY CD10 Core Drill or any other core drill with a 60 mm housing mounting diameter.

The anchor stand may be used with a vacuum pump for vacuum hold down or with a concrete anchor screw to hold the stand in place while drilling. The standard arrangement of the anchor stand is for use with a vacuum pump.

## CAUTION

Use of vacuum to hold the anchor stand on non-horizontal surfaces is not recommended. Loss of vacuum will allow the stand to slip or fall. The result may be personal injury or damage to the drill and stand.

The carriage feed handle may be installed on either end of the pinion gear spindle. Align the cross screw in the handle with the slot in the spindle and push the handle on until the spring detent in the handle snaps into the groove on the spindle.

## TO ATTACH THE CORE DRILL TO THE ANCHOR STAND

1. Loosen the two capscrews that hold the clamp yoke to the carriage. Pull the yoke away from the carriage.
2. Insert the drill into the carriage, seating the drill shoulder against the carriage.
3. Tighten the two capscrews in the clamp yoke to hold the core drill in place.

## WARNING

Use of this tool on certain materials could generate dust potentially containing a variety of hazardous substances such as asbestos, silica or lead. Inhalation of dust containing these or other hazardous substances could result in serious injury, cancer or death. Protect yourself and those around you. Research and understand the materials you are cutting. Follow correct safety procedures and comply with all applicable national, state or provisional health and safety regulations relating to them, including, if appropriate arranging for the safe disposal of the materials by a qualified person.

## TO USE THE ANCHOR STAND WITH A VACUUM PUMP

1. Connect the vacuum pump to the fitting on the base of the anchor stand.
2. Screw the leveling screws up to the underside of the base to allow the base gasket to compress when the vacuum is created.
3. Make sure that the base gasket is in good condition to hold the vacuum.
4. Position the anchor stand so that the drill and bit are aligned where the hole is to be drilled.
5. Make sure the surface that the base gasket will contact is free of debris for a good vacuum seal.
6. Turn on the vacuum pump.
7. To reposition the anchor stand, as required to accurately place the drill bit, press the vacuum release button and move the anchor stand. Release the button to re-establish vacuum.
8. Turn the leveling screws down to contact the surface to be drilled. This will provide a solid, stable footing for the stand. Tighten the jam nuts to lock the leveling screws.
9. Start the core drill.
10. While holding the feed handle, pull the carriage lock knob out to release the carriage from the mast.
11. Feed the drill to the work face and begin drilling.
12. When drilling is finished, return the carriage to the top of the mast. Snap the carriage lock into the hole on the mast to lock the carriage in place.
13. Stop the core drill.

## USING THE ANCHOR STAND WITH AN ANCHOR SCREW

1. Remove the vacuum handle and gasket from the base. The screw that holds the handle in place is located on the underside of the base.
2. Remove the base gasket from the base.
3. Screw the leveling screws up to the underside of the base.
4. Make sure the area where the anchor stand is to be placed is clear of debris.
5. Place the anchor stand to position the drill bit.
6. With a marking pen through the slot in the base, mark on the surface a line along which to place the screw anchor.

# OPERATION

7. Put the anchor stand aside. Drill and set the screw anchor.
8. Place the anchor stand over the screw anchor, put the anchor screw through the slot in the base and gently tighten. Make sure the drill bit is correctly positioned.
9. Turn the leveling screws down to contact the surface to be drilled. Tighten the jam nuts to lock the leveling screws.
10. Tighten the anchor screw to hold the anchor stand in position.
11. Start the core drill.
12. While holding the feed handle, pull the carriage lock knob out to release the carriage from the mast.
13. Feed the drill to the work face and begin drilling.
14. When drilling is finished, return the carriage to the top of the mast. Snap the carriage lock into the hole on the mast to lock the carriage in place.
15. Stop the core drill.
4. Remove the guide bushings from the carriage.
5. Loosen the pinch screws that lock the bushing caps and back out the bushing caps.
6. Install the new guide bushings.
7. Place the carriage on the mast while making sure the guide bushings align with the grooves in the mast.
8. Slide the carriage onto the mast until the carriage lock knob engages the mast.
9. Tighten the bushing caps to remove all carriage play.
10. Tighten the pinch screws to lock the bushing caps.
11. Replace the top carry handle.

The “Bulls Eye” level on the drill carriage is used for indicating level when drilling into a horizontal surface. The level vial on the side of the drill carriage is used for indicating level when drilling into a vertical surface. You can use the leveling screws to make slight adjustments to level the anchor stand.

There is a hex socket head capscrew through the very bottom of the mast into the base. This capscrew solidly holds the mast square to the base. If you want to drill a hole at an angle to the base, this capscrew must be removed.

To adjust the mast to any angle up to 45 degrees, you must loosen the clamping screw located in the sliding handle on the back of the mast. Move the mast to the desired angle and tighten the clamping screw.

## ADJUSTING THE GUIDE BUSHINGS

1. Loosen the pinch screws that lock the bushing caps.
2. Tighten or loosen the bushing caps as necessary to remove play between the carriage and the mast.
3. Tighten the pinch screws to lock the bushing caps.

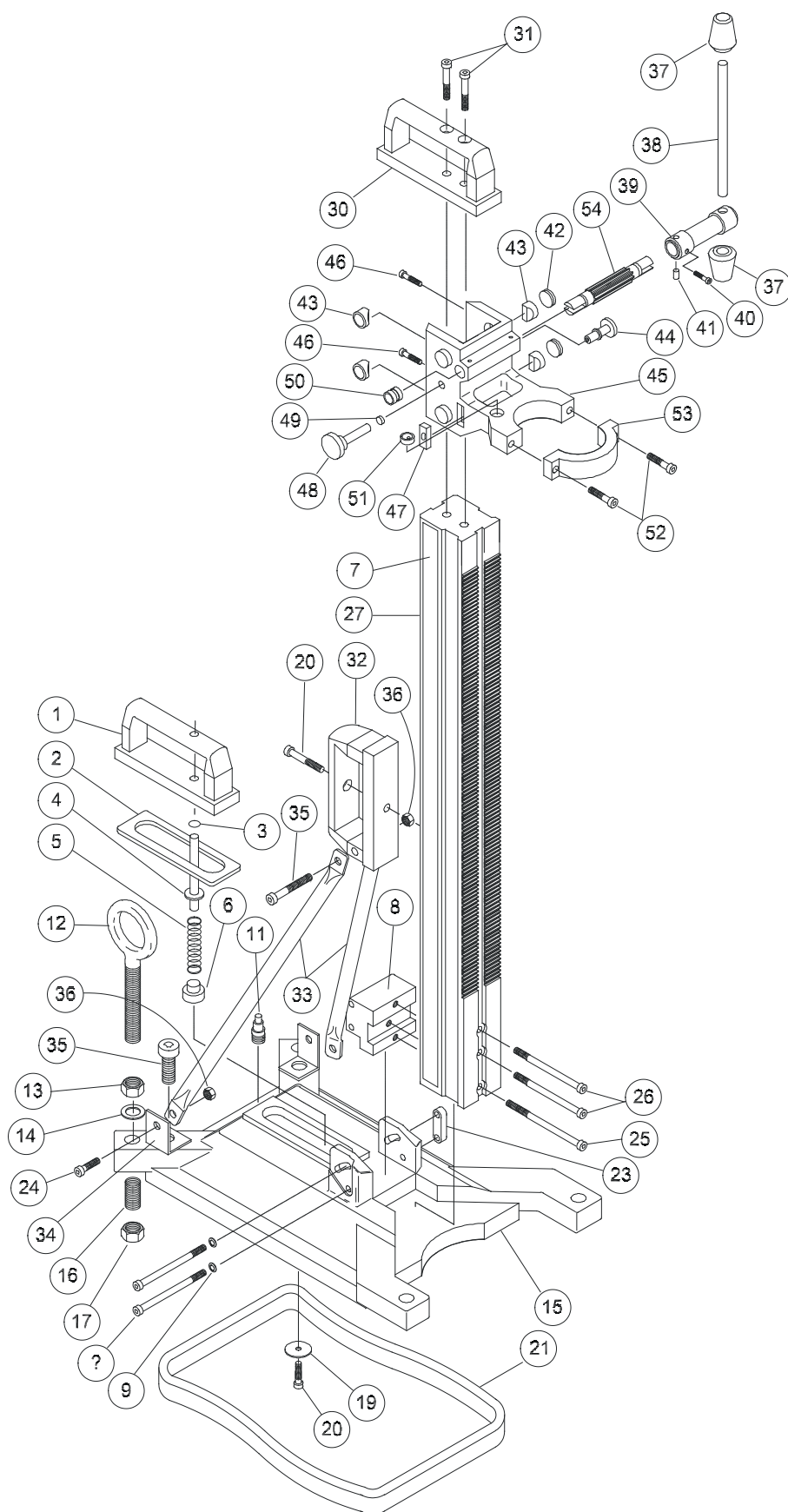
## REPLACING THE GUIDE BUSHINGS

1. Remove the top carry handle.
2. Pull the carriage lock knob to release the carriage.
3. Pull the carriage up and off the mast.

# TROUBLESHOOTING

Problem	Cause	Solution
The anchor stand will not hold a vacuum.	Debris under the base gasket is preventing a good seal.	Clean the surface on which the gasket must seal.
	Debris between the base gasket and the base.	Clean the base surface.
	The gasket is worn out or damaged.	Replace.
	The slot gasket will not seal.	Inspect. Clean or replace.
	The vacuum release button is leaking.	Inspect. Clean or replace.
	Leveling screws are set too far down.	Retract the screws to allow the base gasket to seal.
Excessive play between the carriage and mast.	Normal wear of the guide bushings.	Adjust the guide bushings.
Excessive play between the mast and the base.	Pivot block capscrews are loose.	Gently tighten the capscrews to remove play.

# PARTS ILLUSTRATION



# PARTS LIST

ITEM	PART NO.	QTY	DESCRIPTION
1	65152	1	VACUUM HANDLE
2	65153	1	SLOT CAP GASKET
3	65154	1	O-RING
4	65155	1	VACUUM RELEASE BUTTON
5	65156	1	SPRING
6	65157	1	VACUUM STOP
7	—	—	NO ITEM
8	65158	1	PIVOT BLOCK
9	65159	2	WASHER
10	65160	2	HSH CAPSCREW
11	65161	1	VACUUM BARB
12	65162	4	SCREW EYE
13	65163	4	NUT
14	65272	4	WASHER
15	65164	1	BASE
16	65165	4	HELICOIL
17	65166	4	NUT
18	—	—	NO ITEM
19	65167	1	WASHER
20	65168	1	SCREW
21	65169	1	BASE GASKET
22	—	—	NO ITEM
23	65171	1	CLAMPING PLATE
24	65172	2	SCREW
25	65273	1	HSH CAPSCREW
26	65173	2	HSH CAPSCREW
27	65174	1	COLUMN
28	—	—	NO ITEM
29	—	—	NO ITEM
30	65176	1	CARRY HANDLE
31	65177	2	SCREW
32	65178	1	BACK HANDLE
33	65179	2	BRACE
34	65180	2	SUPPORTING ANGLE
35	65181	2	HSH SCREW
36	65182	3	HEXAGON NUT

ITEM	PART NO.	QTY	DESCRIPTION
37	65183	2	KNOB
38	65184	1	ARM
39	65185	1	HANDLE BASE
40	65187	1	HSH SCREW
41	65188	1	SPRING DETENT
42	65189	2	BUSHING CAP
43	65191	4	BUSHING
44	65192	1	LOCK
45	65193	1	CARRIAGE
46	65194	2	HSH SCREW
47	65195	1	LEVEL VIAL
48	65196	1	KNOB
49	65197	1	NYLON GIB
50	65198	2	BUSHING
51	65199	1	LEVELING INDICATOR
52	65181	2	HSH SCREW
53	65200	1	CAP
54	65201	1	PINION

# **STANLEY®**

STANLEY Infrastructure  
6430 SE Lake Road  
Portland, Oregon 97222 USA  
(503) 659-5660 / Fax (503) 652-1780  
[www.stanleyinfrastructure.com](http://www.stanleyinfrastructure.com)